



**We put Christ at the Centre of our Lives: Think, Speak, Act.**



**Newsletter Date:**  
**Friday 13th December, 2024**

# St. Philip Neri with St. Bede Catholic Voluntary Academy

## Catholic Life: Advent

This week, we lit the second candle of our Advent Wreaths throughout school — a candle to represent 'Peace'. Throughout the week, we've been reflecting on Peace — peace within our own hearts and lives, peace for our community and for the wider world. Each child has been provided with the mission to be people of peace, not just at school but at home too. We hope you've witnessed your child(ren) living out this mission throughout the week.

We've had a fabulously busy week staging various events as we continue our Christmas preparations. Very well done to our Key Stage 1 children for their outstanding traditional Nativity Concert and to our Year 3 & Year 4 children who performed superbly in their Carol Concert. Huge thanks, too, to our wonderful kitchen team who served up a delicious Christmas Dinner yesterday.

God, our Father,  
You are the Light of the World.  
Thank You for sending us Your gift of love,  
Jesus, and helping us to know You.  
We are grateful for our saviour; Lord, Jesus Christ.

Help us to prepare for Christmas like Mary and Joseph, and to say "yes" to your call.  
Help us to stay on the right path and be good people.  
Help us to be ready for Jesus in our hearts.

Thank You for helping us to be good people who are learning to share our love around the world.

Jesus; help us to have peace this Advent and allow us to help those in need.  
Lord, we ask you to help us discover joy and hope this Christmas time and throughout the year.

We will share Your mission in how we THINK (+), SPEAK (+) and ACT (+).

God love us and bless us.  
Amen

Next week, it is the turn of our Foundation Stage children to share their version of the Nativity and our Year 5 & 6 pupils who will end the term with a Carol Concert in church.

As you continue your preparations for Christmas at home, we are pleased to share a copy of our Advent whole school prayer with you to the left of this message.

## Christmas Masses

I know that Canon John would be delighted to welcome you to one of our parish churches this Christmas time. Mass times for Christmas are as follows:

Christmas Eve:	Christmas Day:
5:00pm St. Philip Neri, Mansfield*	10:00am St. Philip Neri, Mansfield
5:00pm St. Joseph's, Shirebrook*	10:00am St. Patrick's, Forest Town
7.30pm St. Teresa's, Warsop	
11:00pm St. Philip Neri, Mansfield (Carols & Readings from 10.30pm)	

*\*These are children's Masses. Children are invited to come dressed as angels/shepherds.*

**Attendance this week: 94%**

FS2KW	100%
FS2NM	98%
Y1BS	88%
Y1JY	98%
Y2RB	97%
Y2RT	93%
Y3RB	95%
Y3AN	95%
Y4AS	94%
Y4DK	92%
Y5BF	96%
Y5VD	95%
Y6LB	94%
Y6SC	98%

## Word of the Week

Next week, our Word of the Week is **joy** which will form the basis of our acts of collective worship throughout the week.



## Liturgy of the Word/Mass

Date	Type of Service	Who's Involved?
Tuesday 17 December	Liturgy of the Word	Year 3
Monday 6 January	Liturgy of the Word	Whole School
Tuesday 14 January	Mass	Year 2
Tuesday 21 January	Mass	Year 1
Tuesday 28 January	Mass	Year 6

As ever, families and parishioners are most welcome to join us at 9.30am in Church for each celebration.

## Toddler Tales

It was wonderful to welcome a group of toddlers and their parents for a Christmas-themed Toddler Tales. As you'll see from the photographs, they all got stuck in and had a great time! Please make a note in your diary of the next Toddler Tales session, which will take place on Wednesday 12th February at 9.15am.



Join the fun when we next meet on Wednesday 12th February at 9.15am.

**Toddler Tales**

## New Fencing Works – Update

You may have noticed that the installation of our new fencing works has now started. The work begins with removing the Foundation Stage wooden fence and replacing this with new green slatted fencing. The work will then continue after the Christmas break erecting 6ft green fencing along the perimeter of the school car park along with new 6ft entry/exit gates, and replacing the existing green fencing that borders Westfield Lane. We do not anticipate that this work will cause too much disruption but will keep you updated if alternative plans or arrangements will be required. Thanks in advance for your cooperation.

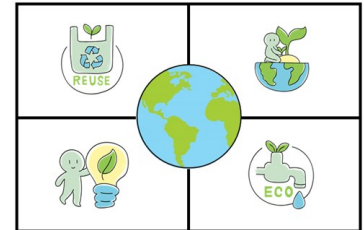
## PTA Christmas Fayre

Last Friday we held our annual PTA Christmas Fayre. The money has all been counted and they have confirmed that a massive **£1669.11** has been raised. Thanks so much for your generosity. After Christmas, the PTA will meet with our School Council to discuss with the children how they would like PTA donations to be spent this year.

## Eco Team's Eco Tips!

### Save Energy at Home:

Turning off lights and electronics when not in use can lower energy bills and reduce carbon footprints.



## Applying for a Reception place 24-

If your child turns 5 between 1st September 2025 and 31 August 2026 and you require a school place for September 2025, you can now apply for their place. The application window will be open until the deadline of Monday 15th January 2025. Applications can be made quickly and easily through the [Nottinghamshire County Council Admissions Hub](#). Please also remember to submit a Supplementary Information Form if you wish for a school place to be considered under a faith criterion. Please note that you **MUST** include the supporting evidence with this form. If you are unable to locate the required faith evidence, please contact the parish where your child was baptised in good time for a 'copy' certificate to be supplied. **All the details and relevant forms can be found on the Admissions section of our [web-site](#)** but please do contact the school office if you need any help or advice.

### Considering listing only ONE school?

**Robin lives in the catchment area of a popular primary school.**

- Parent applies on time listing 1 preference for an out of catchment school
- On National Offer Day, the preferred school is oversubscribed (*more applications than places available*) and a place cannot be offered for Robin
- A place cannot be offered at the catchment school as it is also oversubscribed with preferences
- Robin is offered a place at a school over 6 miles away - the next closest with places available

Apply online at:  
**[nottinghamshire.gov.uk/admissions](https://nottinghamshire.gov.uk/admissions)**

- Apply on time • Use all 4 preferences
- Check the admission criteria

## Key Dates

As well as checking the dates below, we strongly advise that you check Class Dojo regularly to see notifications of other events, including specific year group activities and Class Charity Events. Please note that new events may appear each week so please check back each week in case new events appear!

Date	Time	Event	Location	Who's Involved?
Wednesday 18 Dec	9.30am—10am	Foundation Nativity Play	School Hall	Nursery & Reception
Wednesday 18 Dec	2pm—2.30pm	Foundation Nativity Play	School Hall	Nursery & Reception
Friday 20 Dec	2pm – 2.45pm	Carol Concert	St. Philips' Church	Year 5 & Year 6
Friday 10 Jan	All Day	PTA Pyjama Day for £1		Whole School
Wednesday 22 Jan	All Day	Trip	Space Centre	Year 1
Friday 7 February	9.00am—9.30am	Come & See Assembly	School Hall	Year 1 & Year 2

Please note that the Advent Term ends at 3.30pm next Friday (20th December). We return to school on Monday 6th January, 2025 at 8.40am. Term dates, including INSET days, can be found [here on our school website](#).