



We put Christ at the Centre of our Lives: Think, Speak, Act.

Newsletter Date:
Friday 20th December, 2024

St. Philip Neri with St. Bede Catholic Voluntary Academy

Catholic Life: Advent

This week, we lit the third candle of our Advent Wreaths throughout school — a candle to represent 'Joy'. Throughout the week, we've been reflecting on Joy and exploring how to find joy within our own hearts and lives, within our community and in our world. In readiness of the final week of Advent, we also lit the fourth candle of our Advent Wreaths today.



As we have journeyed through Advent together, we've been reminded of the hope, peace, joy and love that comes with this most special time of the year. This week, our Foundation Stage children reminded us of the first Christmas in their wonderful Nativity Play. And today, we ended the term with our Year 5 and Year 6 children who led us in a beautiful Carol Concert, singing of the celebration of Our Lord's birth at Christmas.

Attendance this week: 93.8%

FS2KW 96.7%

FS2NM 99.6%

Y1BS 91.3%

Y1JY 94.7%

Y2RB 92.4%

Y2RT 93%

Y3RB 95.2%

Y3AN 91%

Y4AS 92.5%

Y4DK 96.3%

Y5BF 90.9%

Y5VD 92.2%

Y6LB 95%

Y6SC 94.4%

God, our Father,
You are the Light of the World.
Thank You for sending us Your gift of love,
Jesus, and helping us to know You.
We are grateful for our saviour; Lord, Jesus Christ.

Help us to prepare for Christmas like Mary and Joseph, and to say "yes" to your call.
Help us to stay on the right path and be good people.
Help us to be ready for Jesus in our hearts.

Thank You for helping us to be good people who are learning to share our love around the world.

Jesus; help us to have peace this Advent and allow us to help those in need.
Lord, we ask you to help us discover joy and hope this Christmas time and throughout the year.

We will share Your mission in how we THINK (+), SPEAK (+) and ACT (+).

God love us and bless us.
Amen

As you continue your preparations for Christmas at home, we share for the final time a copy of our Advent whole school prayer. May you be blessed with hope, peace, joy and love this Christmas time.

May I take this opportunity to thank all you all for your incredible support this term. It is an absolute pleasure working with you and we look forward to continuing our partnership in January.

Christmas Masses

I know that Canon John would be delighted to welcome you to one of our parish churches this Christmas time. Mass times for Christmas are as follows:

Christmas Eve:

- 5:00pm St. Philip Neri, Mansfield*
- 5:00pm St. Joseph's, Shirebrook*
- 7.30pm St. Teresa's, Warsop
- 11:00pm St. Philip Neri, Mansfield (Carols & Readings from 10.30pm)

Christmas Day:

- 10:00am St. Philip Neri, Mansfield
- 10:00am St. Patrick's, Forest Town

**These are children's Masses. Children are invited to come dressed as angels/shepherds.*

Staffing Updates

Having reached the end of the term, we say a massive *thank you* to Miss Bowen who leaves our school to go travelling. Although Miss Bowen has only been here for a short time, she's made a huge impact on her class and we wish her well on her next adventures. We are excited to welcome Mrs. Gregory back from Maternity and to be welcoming Mrs. Bridges to our school, both of whom will teach Miss Bowen's class. This class will become 2GB after the Christmas break.

Please also keep Miss Galvin in your thoughts over the festive period as she is getting married! We pray they have the most wonderful of wedding days. Please note that Miss Galvin will return to school as Mrs. Whittaker.



First Holy Communion Enrolment

Please note that First Holy Communion will take place on **Saturday 21st June, 2025 @ 10am in St. Philip's RC Church, Mansfield**. The programme will be delivered by our school chaplains – Clare Lund and Luke Potter **every Thursday after school until 4.15pm**. More details will be confirmed once your child has been accepted onto the programme.

If your child is a baptised Catholic and you would like to enrol them onto the First Holy Communion programme, please complete the Enrolment Form which can be found on Class Dojo. A copy can also be obtained from the school office. Please ensure your completed form is returned to school by Friday 24th January, 2025.



Word of the Week

When we return from the Christmas holidays, our Word of the Week will be **epiphany** which will form the basis of our acts of collective worship throughout the week.



Liturgy of the Word/Mass

Date	Type of Service	Who's Involved?
Monday 6 January	Liturgy of the Word	Whole School
Tuesday 14 January	Mass	Year 2
Tuesday 21 January	Mass	Year 1
Tuesday 28 January	Mass	Year 6

As ever, families and parishioners are most welcome to join us at 9.30am in Church for each celebration.

New Fencing Works

Our new fencing works is running to schedule. The new fencing in our Foundation Stage is now complete. The work will then continue after the Christmas break erecting 6ft green fencing along the perimeter of the school car park along with new 6ft entry/exit gates, and replacing the existing green fencing that borders Westfield Lane. We do not anticipate that this work will cause too much disruption but will keep you updated if alternative plans or arrangements will be required. Thanks in advance for your cooperation.

PTA Facebook Page

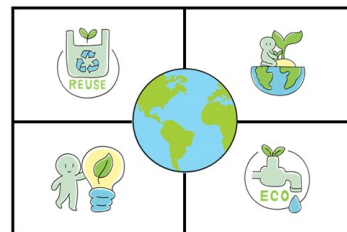
Our PTA have launched a new [Facebook page](#). Click the hyperlink or search *Friends of St Philip Neri* to find and like their page. Here, they'll keep you updated with PTA dates and events. Please spread the word!



Eco Team's Eco Tips!

Paper Recycling Saves Trees:

Recycling one ton of paper can save 17 trees! Think about how much you can recycle this Christmas.







Applying for a Reception place 24-

If your child turns 5 between 1st September 2025 and 31 August 2026 and you require a school place for September 2025, you can now apply for their place. The application window will be open until the deadline of Monday 15th January 2025. Applications can be made quickly and easily through the [Nottinghamshire County Council Admissions Hub](#). Please also remember to submit a Supplementary Information Form if you wish for a school place to be considered under a faith criterion. Please note that you MUST include the supporting evidence with this form. If you are unable to locate the required faith evidence, please contact the parish where your child was baptised in good time for a 'copy' certificate to be supplied. **All the details and relevant forms can be found on the Admissions section of our [web-site](#)** but please do contact the school office if you need any help or advice.

Considering listing only ONE school?

Robin lives in the catchment area of a popular primary school.

-  Parent applies on time listing 1 preference for an out of catchment school
-  On National Offer Day, the preferred school is oversubscribed (*more applications than places available*) and a place cannot be offered for Robin
-  A place cannot be offered at the catchment school as it is also oversubscribed with preferences
-  Robin is offered a place at a school over 6 miles away - the next closest with places available



Apply online at:
nottinghamshire.gov.uk/admissions

- Apply on time
- Use all 4 preferences
- Check the admission criteria

Key Dates

As well as checking the dates below, we strongly advise that you check Class Dojo regularly to see notifications of other events, including specific year group activities and Class Charity Events. Please note that new events may appear each week so please check back each week in case new events appear!

Date	Time	Event	Location	Who's Involved?
Friday 10 Jan	All Day	PTA Pyjama Day for £1		Whole School
Friday 17 Jan	6.00pm — 7.30pm	PTA Meeting	Capo Lounge	Parent volunteers
Wednesday 22 Jan	All Day	Trip	Space Centre	Year 1
Friday 24 Jan	All Day	Holy Year Launch	School	Whole School
Wednesday 29 Jan	9.30am — 10.30am	Ugly Duckling Play	School Hall	Foundation Stage
Friday 7 February	9.00am—9.30am	Come & See Assembly	School Hall	Year 1 & Year 2

Please note that the Advent Term ends at 3.30pm today (Friday 20th December). We return to school on Monday 6th January, 2025 at 8.40am. Term dates, including INSET days, can be found [here on our school website](#).