



**We put Christ at the Centre of our Lives: Think, Speak, Act.**

**Newsletter Date:**  
**Friday 10th January, 2025**

# St. Philip Neri with St. Bede Catholic Voluntary Academy

## Happy New Year!

A very warm welcome back to school. Happy New Year to you all. May I take this opportunity to wish you a happy, healthy and prosperous 2025.

Our new term began with a special Liturgy of the Word to mark the feast of the Epiphany. Our mission following this has been to bless ourselves with water to affirm our commitment to God and to offer our hopes for a good year. Having visited classrooms and spoken to teachers and our children, I am most certainly full of hope for the year ahead too!



As always, your child's class teacher will provide you with a copy of this term's Curriculum Matters Newsletter, which will outline the learning that will take place between now and Easter. Do speak to your child's teacher if you have any questions or queries, or if you're able to help in any way.

## Staffing Updates

It's been wonderful to welcome Mrs Gregory back this week following her maternity leave. She will teach in Year 2 alongside Mrs Bridges, who we also welcomed to our school this week.

I'm also delighted to share that Miss Galvin celebrated her wedding during the Christmas holiday. I know that you'll share your congratulations with ours as we wish them a long and happy marriage. Please note that Miss Galvin has returned to school as Mrs. Whittaker.

## Applying for a Reception place 24-25

Please be reminded for the final time that the deadline for applying for a school place for a child who turns 5 between 1st September 2025 and 31 August 2026. **The application window will be open until the deadline of Monday 15th January 2025.** Applications can be made quickly and easily through the [Nottinghamshire County Council Admissions Hub](#). Please also remember to submit a Supplementary Information Form if you wish for a school place to be considered under a faith criterion. Please note that you **MUST** include the supporting evidence with this form. If you are unable to locate the required faith evidence, please contact the parish where your child was baptised in good time for a 'copy' certificate to be supplied. **All the details and relevant forms can be found on the Admissions section of our website** but please do contact the school office if you need any help or advice.

Attendance this week: 95.2%	
FS2KW	98.7%
FS2NM	97.8%
Y1BS	92.6%
Y1JY	94.5%
Y2GB	97.3%
Y2RT	94.7%
Y3RB	91.1%
Y3AN	96.1%
Y4AS	90.9%
Y4DK	95.3%
Y5BF	97.2%
Y5VD	92.9%
Y6LB	96.9%
Y6SC	98.7%

### Considering listing only ONE school?

- Robin lives in the catchment area of a popular primary school.**
- Parent applies on time listing 1 preference for an out of catchment school
  - On National Offer Day, the preferred school is oversubscribed (*more applications than places available*) and a place cannot be offered for Robin
  - A place cannot be offered at the catchment school as it is also oversubscribed with preferences
  - Robin is offered a place at a school over 6 miles away - the next closest with places available

Apply online at:  
**nottinghamshire.gov.uk/admissions**

- Apply on time
- Use all 4 preferences
- Check the admission criteria

# First Holy Communion Enrolment

Please note that First Holy Communion will take place on **Saturday 21<sup>st</sup> June, 2025 @ 10am in St. Philip's RC Church, Mansfield**. The programme will be delivered by our school chaplains – Clare Lund and Luke Potter **every Thursday after school until 4.15pm**. More details will be confirmed once your child has been accepted onto the programme.

If your child is a baptised Catholic and you would like to enrol them onto the First Holy Communion programme, please complete the Enrolment Form which can be found on Class Dojo. A copy can also be obtained from the school office. Please ensure your completed form is returned to school by **Friday 24th January, 2025**.



## Word of the Week

Next week, our Word of the Week will be **Baptism** as the church celebrates the Baptism of our Lord this Sunday. The word **Baptism** will form the basis of our acts of collective worship throughout the week.

# Baptism

## Liturgy of the Word/Mass

Date	Type of Service	Who's Involved?
Monday 6 January	Liturgy of the Word	Whole School
Tuesday 14 January	Liturgy of the Word*	Year 2
Tuesday 21 January	Liturgy of the Word*	Year 1
Tuesday 28 January	Mass	Year 6

*\*please note that due to clergy commitments, the scheduled Masses have been replaced by Liturgy of the Word celebrations in the school hall.*

As ever, families and parishioners are most welcome to join us at 9.30am in Church for each celebration **but in school on the 14th and 21st**.

## Fencing Works

Despite the weather, the fencing works continue to run to schedule. Next week, work will begin to erect 6ft green fencing along the perimeter of the school car park along with new 6ft entry/exit gates. At this stage, we anticipate that this work will not cause too much disruption but will keep you updated if alternative plans or arrangements will be required. Thanks in advance for your cooperation.

## PTA Updates

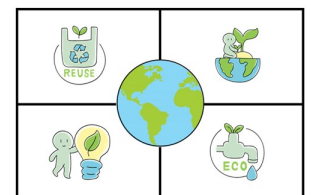
Many thanks for supporting the PTA's PJ Day yesterday. Once the money has been counted, we'll share how much was raised.

The PTA have also launched a new [Face-book page](#). Click the hyperlink or search *Friends of St Philip Neri* to find and like their page. Here, they'll keep you updated with PTA dates and events. Please spread the word!

## Eco Team's Eco Tip!

### Lunchbox Choices Matter

Using reusable containers for lunches reduces single-use plastic waste.

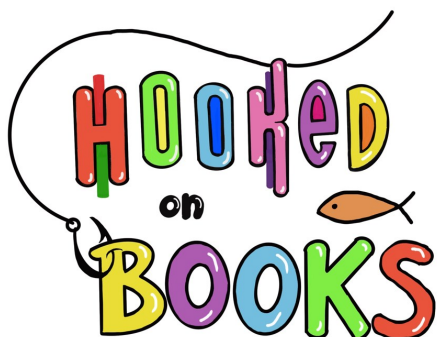


## Lime Trees Wrap Around

If you need wrap around care, please be reminded of the service that *The Lime Trees* provide right here on our school site. Their breakfast club runs from 7.30am and after school provision runs until 6pm. Find out more here on [our website](#).

## Hooked On Books

We're really excited to restart our family reading initiative Hooked on Books for another term. Hooked on Books is an opportunity for parents/carers/grandparents to come along and enjoy some quality time sharing our new treasure chests of stories with their children and to stay to listen to a class story at the end of the session together too. Please see this term's dates for your child's class below:



Date	Year Group
16th January	Year 1JY
23rd January	Year 1BS
30th January	Year 2RT
6th February	Year 2GB
7th February	FS1 & FS2
13th February	Year 3RB

Date	Year Group
27th February	Year 3AN
6th March	Year 4DK
13th March	Year 4AS
20th March	Year 5VD
27th March	Year 5BF
3rd April	Year 6LB & 6SC

Each session will start at 9am in the Dining Hall, so please arrive at the School Office a few minutes before this time and the class teacher will be there to greet you. (Nursery and Reception classes session will be in their classroom).

## Key Dates

As well as checking the dates below, we strongly advise that you check Class Dojo regularly to see notifications of other events, including specific year group activities and Class Charity Events. Please note that new events may appear each week so please check back each week in case new events appear!

Date	Time	Event	Location	Who's Involved?
Friday 17 Jan	6.00pm — 7.30pm	PTA Meeting	Capo Lounge	Parent volunteers
Wednesday 22 Jan	All Day	Trip	Space Centre	Year 1
Friday 24 Jan	All Day	Holy Year Launch	School	Whole School
Wednesday 29 Jan	9.30am — 10.30am	Ugly Duckling Play	School Hall	Foundation Stage
Thursday 30 Jan	During school day	Pilgrimage to Church	St. Philip's Church	Year 6
Friday 7 February	9.00am—9.30am	Come & See Assembly	School Hall	Year 1 & Year 2
Thurs 13 February	6.00pm—8.00pm	PTA Family Bingo Night	School Hall	Whole School

Please note that our next INSET Day is on Friday 14th February. Therefore, the Half Term holiday begins on Thursday 13th February at 3.30pm. We return to school on Monday 24th January, 2025 at 8.40am. Term dates, including INSET days, can be found [here on our school website](#).