



We put Christ at the Centre of our Lives: Think, Speak, Act.



Newsletter Date:
Friday 17th January, 2025

St. Philip Neri with St. Bede Catholic Voluntary Academy

First Holy Communion Enrolment

If your child is a baptised Catholic, in Year 3 or above, and you would like to enrol them onto the First Holy Communion programme, please complete the Enrolment Form which can be found on Class Dojo. A copy can also be obtained from the school office. Please ensure your completed form is returned to school by **Friday 24th January, 2025**.



Please note that First Holy Communion will take place on **Saturday 21st June, 2025 @ 10am in St. Philip's RC Church, Mansfield**. The programme will be delivered by our school chaplains – Clare Lund and Luke Potter **every Thursday after school until 4.15pm**. More details will be confirmed once your child has been accepted onto the programme.

OPAL (Outdoor Play And Learning)

A few families new to our school have been asking about OPAL play so we thought we'd share further information about OPAL in case you're unfamiliar with it or have missed previous correspondence.



OPAL is a national initiative that aims to make lunchtimes more exciting. Embarking on the OPAL programme has enabled us to strategically and sustainably improve the quality of our children's play opportunities. Our pupils tell us daily how much better lunchtimes are since introducing OPAL in February. In fact, some children have already asked if it can be extended to morning breaktime too, which we're currently considering! Children in British primary schools spend 20% or 1.4 years of their school attendance in play. Research shows that play contributes to children's physical and emotional health, well-being, approach to learning and enjoyment of school. (More details of this can be found in [this OPAL document called Power of Play](#)).

Given the importance of play, we are transforming the quality of play in our school to meet our children's social, emotional and environmental needs. You can also find out more information about OPAL on our [school website](#), which also contains photographs to share what the children get up to at lunchtimes.

Jubilee Year of Hope

We are excited to share that next Friday, we will celebrate the launch of the Catholic Church's Jubilee Year of Hope. This is a special time of grace and reflection offering a unique opportunity for us to deepen our faith, renew our commitment to God and experience His mercy in profound ways. Friday will be a day where our children will experience a range of different prayer forms to begin this exciting year and to help us remember that hope is always present, even in the most difficult times. Following Friday's launch, we will share ideas of how you can participate in the Jubilee Year. If you'd like to find out more, the CAFOD website contains lots of further information.



Attendance this week: 96.8%

FS2KW	96.8%
FS2NM	98.8%
Y1BS	94.7%
Y1JY	98.4%
Y2GB	98.7%
Y2RT	93%
Y3RB	97.2%
Y3AN	95.2%
Y4AS	92.5%
Y4DK	100%
Y5BF	95.6%
Y5VD	98.7%
Y6LB	99.1%
Y6SC	96.5%

NottAlone: It's OK to feel not OK

If you or anyone you know is struggling with their mental health and are in need of advice and help, NottAlone is a really good starting point. This comprehensive website provides local mental health advice, covering a range of areas from self-harm, to family separation, suicidal thoughts or worries about gangs/gang culture. Click [here to visit the NottAlone website](#).



School Dinners

Please be reminded of the excellent school meals that are freshly prepared and served daily by our wonderful kitchen team. Our school meals form part of a healthy and balanced diet with several options for children to choose from each day. A copy of this term's delicious menu can be found [here](#).



If you think your child may be eligible for a Free School Meal, please [click here](#).

[Note that we use Derbyshire County Council for this service].

For children in FS2, Year 1 and Year 2, school meals are **completely free of charge**. For children in Year 3 to Year 6, the cost is £2.60 each day unless eligible for a free school meal through pupil premium funding. School meals can be paid for on Arbor.

It's always worth checking if you're eligible for pupil premium funding. The process is quick and easy too. All you need is your National Insurance Number or National Asylum Support Service Reference Number, your surname and your date of birth. If eligible, school will be able to support you in other ways, for example by heavily subsidising the cost of trips and visits, including residential visits.

Liturgy of the Word/Mass

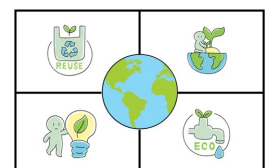
Date	Type of Service	Who's Involved?
Tuesday 21 January	Liturgy of the Word*	Year 1
Tuesday 28 January	Mass	Year 6
Tuesday 4 February	Liturgy of the Word	Year 5
Tuesday 11 February	Liturgy of the Word	Year 4

As ever, families and parishioners are most welcome to join us at 9.30am in Church for each celebration **but in school on the 21st January**.

Eco Team's Eco Tip!

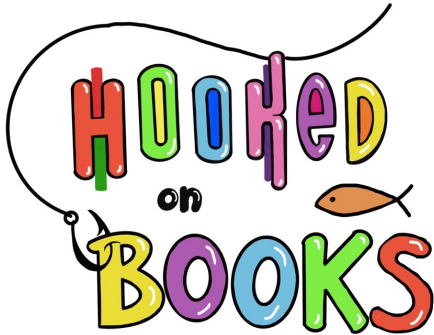
Reusable bags reduce plastic use

Taking your own bags for shopping significantly reduces the need for single-use plastics.



Hooked On Books

We're really excited to restart our family reading initiative Hooked on Books for another term. Hooked on Books is an opportunity for parents/carers/grandparents to come along and enjoy some quality time sharing our new treasure chests of stories with their children and to stay to listen to a class story at the end of the session together too. Please see this term's dates for your child's class below:



Date	Year Group
23rd January	Year 1BS
30th January	Year 2RT
6th February	Year 2GB
7th February	FS1 & FS2
13th February	Year 3RB

Date	Year Group
27th February	Year 3AN
6th March	Year 4DK
13th March	Year 4AS
20th March	Year 5VD
27th March	Year 5BF
3rd April	Year 6LB & 6SC

Each session will start at 9am in the Dining Hall, so please arrive at the School Office a few minutes before this time and the class teacher will be there to greet you. (Nursery and Reception classes session will be in their classroom).

Word of the Week

Next week, our Word of the Week will be **Discipleship**. This word will form the basis of our acts of collective worship throughout the week.

Lime Trees Wrap Around Care

If you need wrap around care, please be reminded of the service that *The Lime Trees* provide right here on our school site. Their breakfast club runs from 7.30am and after school provision runs until 6pm. Find out more here on [our website](#).

Key Dates

As well as checking the dates below, we strongly advise that you check Class Dojo regularly to see notifications of other events, including specific year group activities and Class Charity Events. Please note that new events may appear each week so please check back each week in case new events appear!

Date	Time	Event	Location	Who's Involved?
Friday 24 Jan	All Day	Holy Year Launch	School	Whole School
Wednesday 29 Jan	9.30am —10.30am	Ugly Duckling Play	School Hall	Foundation Stage
Thursday 30 Jan	During school day	Pilgrimage to Church	St. Philip's Church	Year 6
Friday 7 February	9.00am—9.30am	Come & See Assembly	School Hall	Year 1 & Year 2
Thurs 13 February	6.00pm—8.00pm	PTA Family Bingo Night	School Hall	Whole School

Please note that the our next INSET Day is on Friday 14th February. Therefore, the Half Term holiday begins on Thursday 13th February at 3.30pm. We return to school on Monday 24th January, 2025 at 8.40am. Term dates, including INSET days, can be found [here on our school website](#).