



**We put Christ at the Centre of our Lives: Think, Speak, Act.**



**Newsletter Date:**  
**Friday 24th January, 2025**

# St. Philip Neri with St. Bede Catholic Voluntary Academy

## Catholic Jubilee Year of Hope

Across the world, Catholic schools have united today to celebrate the launch of the Catholic Church's Jubilee Year of Hope. The Pope has chosen the theme of Hope because he recognises the many challenges facing us and our world at present. This year, we have the opportunity to come together, deepen our faith and renew our commitment to God. By doing this, we can work together for the good of all people and our world.



This morning, all 36 of the schools in the Our Lady of Lourdes Catholic Multi-Academy Trust joined together for a shared Jubilee launch event. This provided us with the special opportunity to gather in prayer and consider how we can be ambassadors of hope over this next year. Following this, the children were immersed in a range of prayer activities, designed by our chaplains and chaplaincy team, to strengthen our understanding of this special Jubilee Year and what it means. There will be lots of ways for you to get involved at home too; we'll share more as we journey together through the year. If you'd like to learn more, the [CAFOD website](#) contains lots of further information. As well as this, find inspiration from the [Minutes of Hope website](#) created by our Trust, which contains thousands of one minute videos from people across England and Wales who show the hope our faith can bring to the world today.

## OPAL (Outdoor Play And Learning)

As we draw a little closer towards the spring, we will soon be looking to plant flowers, vegetables and herbs around the caravan garden. To help us with this, we'd be grateful to receive any donations of seeds or bulbs, seedlings, offcuts or old planters.



As an added bonus, we'd really love to hear from any keen gardeners who could donate a little time to working with our pupils to develop a small plot. We really want our children to experience the joy of planting, caring for what grows and harvesting the fruits. However, in order to do this, we need some gardening expertise! Please let Mrs Shivley know if you or someone you know can help.

## Word of the Week

Next week, our Word of the Week will be **Scripture**. Scripture is the Word of God where we are inspired to live a life of faith and learn about His plan for our lives. Scripture can also be a source of comfort and guidance in difficult times. This word will form the basis of our acts of collective worship throughout the week.

## Lime Trees Wrap Around Care

If you need wrap around care, please be reminded of the service that *The Lime Trees* provide right here on our school site. Their breakfast club runs from 7.30am and after school provision runs until 6pm. Find out more here on [our website](#).



Attendance this week: 95.6%	
FS2KW	99.2%
FS2NM	96%
Y1BS	93.7%
Y1JY	96.1%
Y2GB	95.7%
Y2RT	88.3%
Y3RB	96.9%
Y3AN	97.7%
Y4AS	92.5%
Y4DK	98.4%
Y5BF	97.5%
Y5VD	93.9%
Y6LB	95.6%
Y6SC	96.8%

## Parents' Evening

Parents' Evening will take place on Tuesday 4th March and Thursday 6th March. These will be face-to-face meetings in school. From the end of next week, you will be able to book a slot to meet your child's class teacher using the Arbor app.

## Mansfield Children's Choir

Christopher Davis, the Choral Director for the Diocese of Nottingham, is looking for new members to join the Mansfield Children's Choir. The choir is open from anyone aged seven and up. They rehearse after school each **Wednesday at St. Philip Neri Church from 4:30pm until 5:45pm**. Your child would be warmly welcomed.

## School Dinners

Please be reminded of the excellent school meals that are freshly prepared and served daily by our wonderful kitchen team. Our school meals form part of a healthy and balanced diet with several options for children to choose from each day. A copy of this term's delicious menu can be found [here](#).



If you think your child may be eligible for a Free School Meal, please [click here](#).

[Note that we use Derbyshire County Council for this service].

For children in FS2, Year 1 and Year 2, school meals are completely free of charge. For children in Year 3 to Year 6, the cost is £2.60 each day unless eligible for a free school meal through pupil premium funding. School meals can be paid for on Arbor.

It's always worth checking if you're eligible for pupil premium funding. The process is quick and easy too. All you need is your National Insurance Number or National Asylum Support Service Reference Number, your surname and your date of birth. If eligible, school will be able to support you in other ways, for example by heavily subsidising the cost of trips and visits, including residential visits.

## Liturgy of the Word/Mass

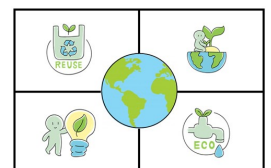
Date	Type of Service	Who's Involved?
Tuesday 28 January	Mass	Year 6
Tuesday 4 February	Liturgy of the Word	Year 5
Tuesday 11 February	Liturgy of the Word	Year 4

As ever, families and parishioners are most welcome to join us at 9.30am in Church for each celebration.

## Eco Team's Eco Tip!

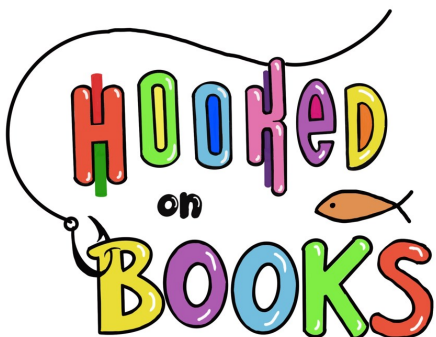
### Saving water in the bathroom

Turning off the tap while brushing teeth can save up to 6 litres of water per minute!



## Hooked On Books

Our Hooked on Books initiative has been really well received so far this term for our Year 1 classes. Hooked on Books is an opportunity for parents/carers/grandparents to come along and enjoy some quality time sharing our new treasure chests of stories with their children and to stay to listen to a class story at the end of the session together too. Please see this term's dates for your child's class below:



Date	Year Group
30th January	Year 2RT
6th February	Year 2GB
7th February	FS1 & FS2
13th February	Year 3RB

Date	Year Group
27th February	Year 3AN
6th March	Year 4DK
13th March	Year 4AS
20th March	Year 5VD
27th March	Year 5BF
3rd April	Year 6LB & 6SC

Each session will start at 9am so please arrive at the School Office a few minutes before this time and the class teacher will be there to greet you. Please note that the **FS1 (Nursery) and FS2 (Reception)** session will take place **3pm**, not 9am.

## Key Dates

As well as checking the dates below, we strongly advise that you check Class Dojo regularly to see notifications of other events, including specific year group activities and Class Charity Events. Please note that new events may appear each week so please check back each week in case new events appear!

Date	Time	Event	Location	Who's Involved?
Wednesday 29 Jan	9.30am —10.30am	Ugly Duckling Play	School Hall	Foundation Stage
Thursday 30 January	During school day	Pilgrimage to Church	St. Philip's Church	Year 6
Friday 31 January	During school day	Mr Yemm, MP visit	School Hall	Whole School
Friday 7 February	9.00am—9.30am	Come & See Assembly	School Hall	Year 1 & Year 2
Thurs 13 February	6.00pm—8.00pm	PTA Family Bingo Night	School Hall	Whole School
Tuesday 4 March	3.40pm—6.00pm	Parents' Evening	School Hall	Whole School
Thursday 6 March	3.40pm—6.00pm	Parents' Evening	School Hall	Whole School
Friday 21 March	9.00am—9.30am	Choral Verse	School Hall	FS2, Y1, Y2
Friday 28 March	9.00am—9.30am	Choral Verse	School Hall	Y3, Y4, Y5, Y6

Please be aware that the PTA have POSTPONED the Family Bingo Night due to take place on 13th February. This event will now take place on Thursday 24th April.

Please note that the our next INSET Day is on Friday 14th February. Therefore, the Half Term holiday begins on Thursday 13th February at 3.30pm. We return to school on Monday 24th February, 2025 at 8.40am. Term dates, including INSET days, can be found [here on our school website](#).